

Mangorei School (2189)

Enrolment Scheme

Effective from 30th September 2016

The guidelines for development and operation of enrolment schemes are issued under section 11G (3) of the Education Act 1989 for the purpose of describing the basis on which the Secretary's powers in relation to enrolment schemes will be exercised.

Home Zone

All students who live within the home zone described below (and shown on the attached map) shall be entitled to enrol at the school.

In a clockwise direction the zone is defined as:

- The zone begins at #306-309 Mangorei Road and connects in a straight line, in an easterly direction, to the western side of Waiwhakaiho River.
- The boundary follows the western side of Waiwhakaiho River heading south. The boundary then crosses Junction Road to connect to Thomason Road. The boundary turns left into Albert Road (#17 Thomason Road is included within the boundary), and proceeds along Albert Road to Hill Road (including both sides of the road).
- The zone proceeds into Hill Road (both sides) to the slopes of Mt Taranaki. (Maude Road is included within the zone).
- The boundary proceeds along both sides of Mangorei Road to the north.
- From Mangorei Road, the boundary travels north (both sides of Baker Road are included within the zone boundary) and continues until Mangorei Road intersects with Junction Road.
- The boundary then runs north along Junction Road (Holly Oak Terrace is included within the zone boundary) including both sides of the road until the intersection with Junction Street. The boundary proceeds along Junction Street (the zone includes 19A Junction Street) until it meets the Te Henui Stream crossing. The boundary follows the Te Henui Stream, crossing the New Plymouth Southern Motorway (SH3). The boundary continues along the southern side of the Te Henui Stream. The Zone encompasses Durham Ave and Lambton Tce and travels in a straight line east to intersect with Heta Street at (and including) #170 and #171 Heta Road. The boundary continues east crossing the top of Karina Road (including #91 Karina Road) and then continues eastward to cross at #306-309 Mangorei Road rejoining the starting point.

Proof of residence within the home zone will be required.

Special Programmes

This priority category is not applicable at this school because the school does not run a Special programme approved by the Secretary.

Rae Karipa
Manager Education
Taranaki, Whanganui, Manawatu

Rae Karipa 27/9/16

Out of Zone Enrolments

Each year the board will determine the number of places which are likely to be available in the following year for the enrolment of students who live outside the home zone. The board will publish this information by notice in a daily or community newspaper circulating in the area served by the school. The notice will indicate how applications are to be made and will specify a date by which all applications must be received.

Applications for enrolment will be processed in the following order of priority:

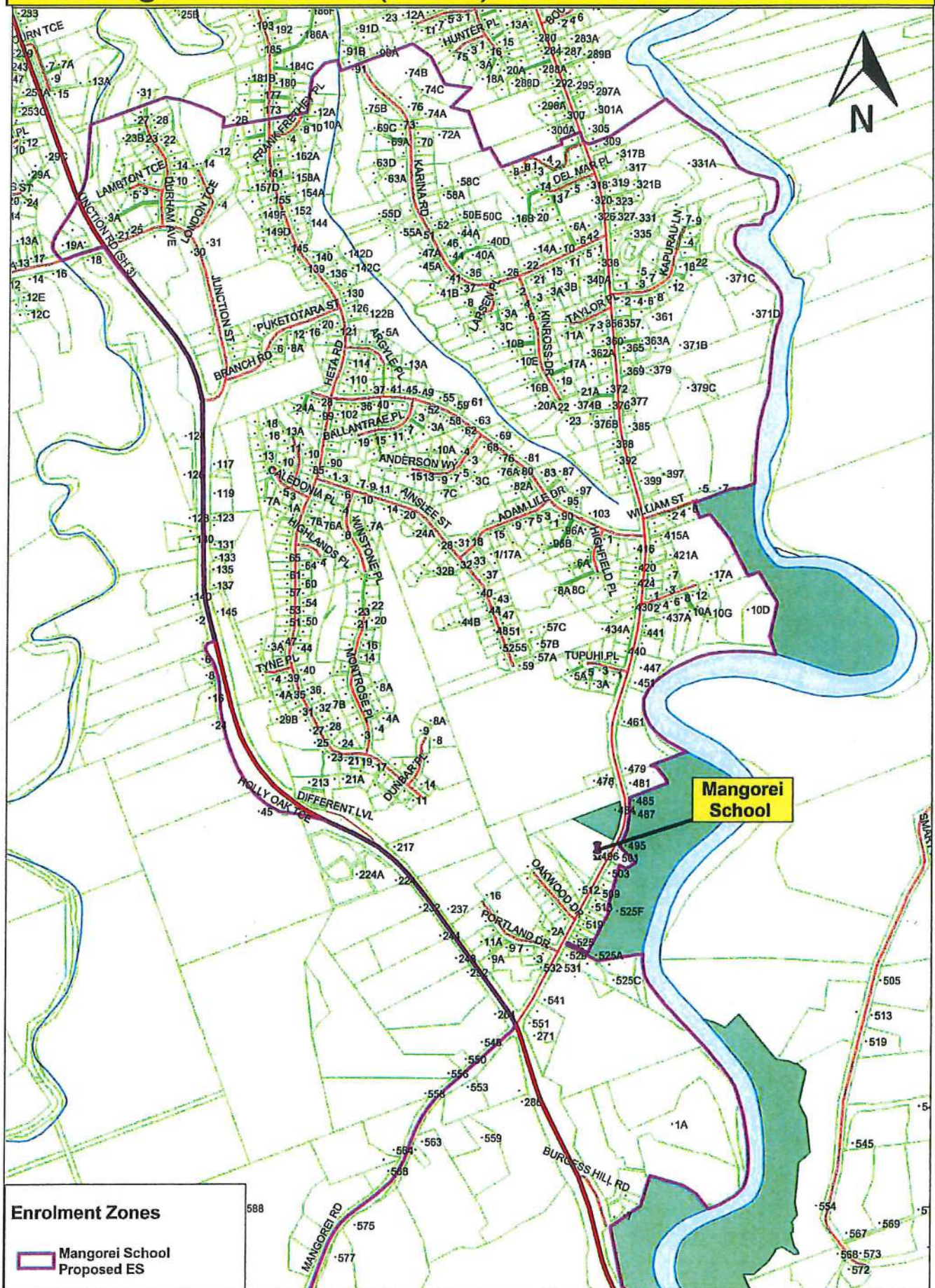
- First Priority This priority category is not applicable at this school because the school does not run a special programme approved by the Secretary
- Second Priority will be given to applicants who are siblings of current students
- Third Priority will be given to applicants who are siblings of former students
- Fourth Priority will be given to any applicant who is a child of a former student of the school
- Fifth Priority will be given to any applicant who is either a child of an employee of the board of the school or a child of a member of the board of the school
- Sixth Priority will be given to all other applicants

If there are more applicants in the second, third, fourth, or fifth priority groups than there are places available, selection within the priority group will be by a ballot conducted in accordance with instructions issued by the Secretary under Section 11G(1) of the Education Act 1989. Parents will be informed of the date of any ballot by notice in a daily or community newspaper circulating in the area served by the school.

Rae Karipa
Manager Education
Taranaki, Whanganui, Manawatu

Rae Karipa 27/9/16

Mangorei School (2189): Enrolment Zone

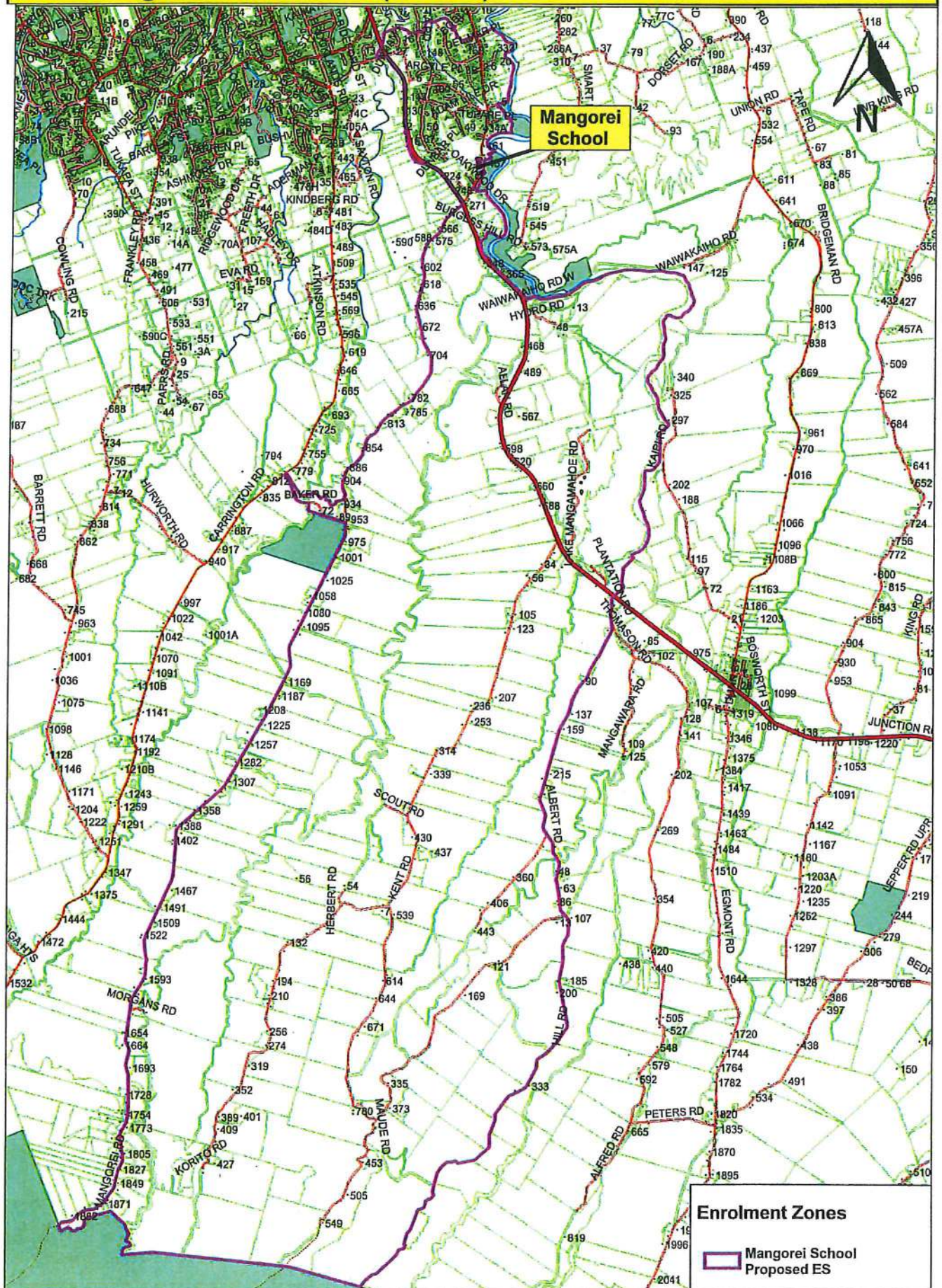


Sourced from LINZ Data. Crown and Critchlow. Copyright reserved. Census boundaries from Statistics New Zealand

Rae Karipa
Manager Education
Taranaki, Whanganui, Manawatu

R. Karipa 27/9/16

Mangorei School (2189): Enrolment Zone



Sourced from LINZ Data. Crown and Critchlow. Copyright reserved. Census boundaries from Statistics New Zealand

Rae Karipa
Manager Education
Taranaki, Whanganui, Manawatu

R. Karipa 27/9/16